

Trusting the ECA Certificate Authority in Microsoft Internet Explorer

In order for an application (like Internet Explorer or Outlook) to make use of a certificate without sending up a host or warning messages, the application must be told to 'trust' the certificate. The most efficient way to tell an application that certificates are trusted is to trust Certificate Authorities. A Certificate Authority (CA) is an entity that issues certificates. By trusting an entire CA, you trust all certificates issued by that CA. Microsoft comes with many commercial CAs 'pre-trusted' before you ever turned the computer on. But the CAs authorized by the Federal Government do not (as yet) come pre-trusted.

These instructions will tell you how to Trust the ORC ECA Certificate Authority, so that Microsoft applications will not give you warnings about your certificates (or any other certificates issued by the ORC ECA CA).

Note: If you have ECA certificates then you are trying to communicate with the US Department of Defense (US DoD). The US DoD has two Certificate Authority programs; the DoD PKI and the DoD External Certification Authority (ECA) PKI. The DoD PKI consists of the US DoD issuing certificates internally to US DoD end entities (like DoD employees and DoD web sites). The ECA PKI consists of vendors that are authorized by the US DoD to issue certificates to end entities outside of the US DoD that need to communicate with the DoD. You probably need to trust both the DoD PKI and ECA PKI. If so, look at our instructions for Trusting the DoD PKIs; if you perform those instructions, then you will not need to perform the instructions below.

These instructions and associated screen captures were created with Internet Explorer 7 running on a Windows XP operating system. Variations in versions of Internet Explorer and the Windows Operating system will result in some variation of alert boxes and screen images. For the most part, the process and individual steps are the same across Windows platforms. (You might see a dialog box prompting you to 'allow' access on a Windows Vista/ Windows 7 computer; just click the buttons that seem to move the process forward.)

1. Start Internet Explorer. In the address bar, go to:
<http://eca.orc.com/trustmsie.html>

The screenshot shows a Windows Internet Explorer browser window titled "External Certificate Authority - Windows Internet Explorer". The address bar contains the URL "http://eca.orc.com/trustmsie.html". The browser interface includes a menu bar (File, Edit, View, Favorites, Tools, Help), a search bar with the Google logo, and a toolbar with various icons. The main content area displays instructions for installing certificates, including a "Print" button and a list of steps with corresponding "Click Here" buttons.

Print and keep this page for reference. Upon clicking the links for **Step 1** through **Step 3** below your browser will prompt you to open the certificate prior to installing it. Follow the sequence below as you install the ECA Root and ORC ECA Certificates.

Screen 1:	Click Open in the "File Download" window.
	NOTE: If the certificate will not open, select save, and open it from your desktop
Screen 2:	Review the text and click Install Certificate .
Screen 3:	Review the text and click Next .
Screen 4:	Review the text and click Next .
Screen 5:	Review the text and click Finish .
Pop-Up:	"The Import was Successful." Click OK
Screen 6:	Return to the "Certificate" window: Click OK

- **Step 1. Trust the ECA Root 2 Certificate Authority ::** [Click Here](#)
- **Step 2. Trust the ORC ECA CA SW3 Certificate Authority ::** [Click Here](#)
- **Step 3. Trust the ORC ECA CA HW3 Certificate Authority ::** [Click Here](#)
- **Step 4. (Optional) Trust ORC ECA Certificates issued prior to 1 July 2008 ::** [Click Here](#)
- **Step 5. Obtain Your Certificate ::** [Click Here](#)

2. Click on Step 1 Trust the ECA Root 2 Certificate Authority. (Always try to trust the Root Certificate of any CA first.)

External Certificate Authority - Windows Internet Explorer

http://eca.orc.com/trustmsie.html

File Edit View Favorites Tools Help

Google Search

ZONEALARM Protection Activity Site Status

ZONEALARM SPY BLOCKER Search Web

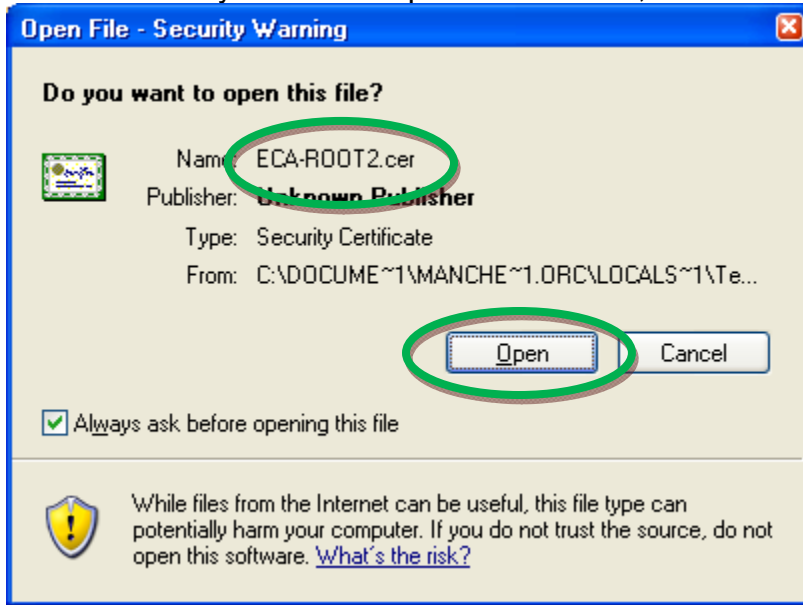
External C... x kurpadr [ORC ...

Print and keep this page for reference. Upon clicking the links for **Step 1** through **Step 3** below your browser will prompt you to open the certificate prior to installing it. Follow the sequence below as you install the ECA Root and ORC ECA Certificates.

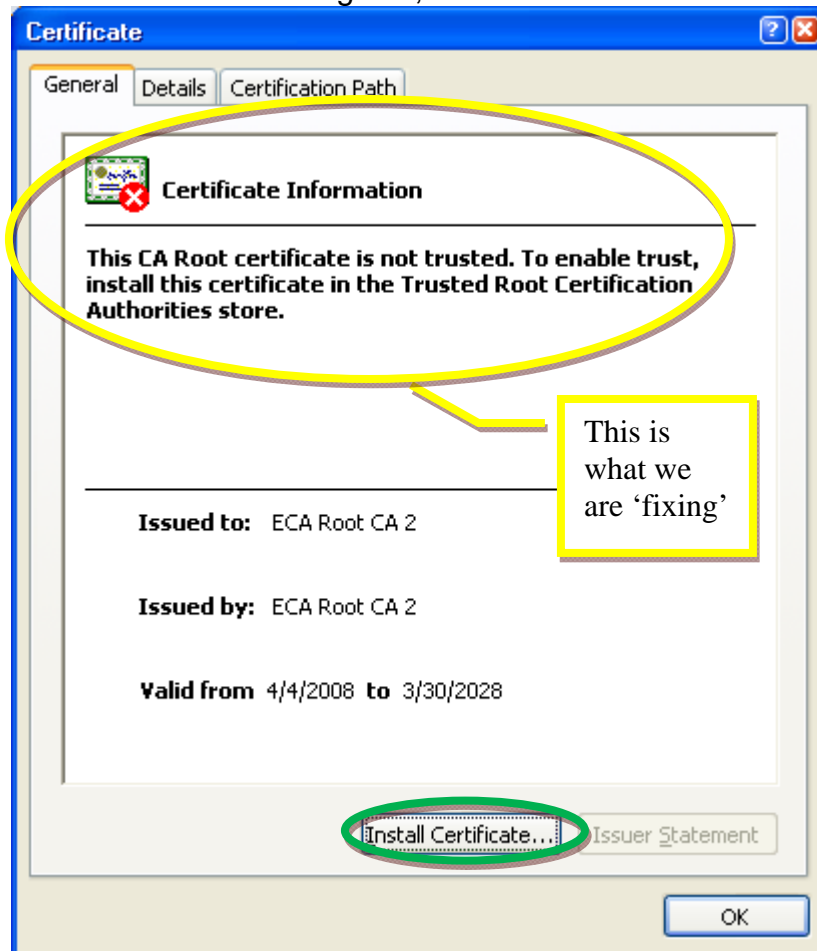
Screen 1:	Click Open in the "File Download" window. NOTE: If the certificate will not open, select save, and open it from your desktop
Screen 2:	Review the text and click Install Certificate .
Screen 3:	Review the text and click Next .
Screen 4:	Review the text and click Next .
Screen 5:	Review the text and click Finish .
Pop-Up:	"The Import was Successful." Click OK
Screen 6:	Return to the "Certificate" window: Click OK

➤ Step 1. Trust the ECA Root 2 Certificate Authority ::	Click Here
➤ Step 2. Trust the ORC ECA CA SW3 Certificate Authority ::	Click Here
➤ Step 3. Trust the ORC ECA CA HW3 Certificate Authority ::	Click Here
➤ Step 4. (Optional) Trust ORC ECA Certificates issued prior to 1 July 2008 ::	Click Here
➤ Step 5. Obtain Your Certificate ::	Click Here

- When asked if you want to open this file now, click the **Open** button.



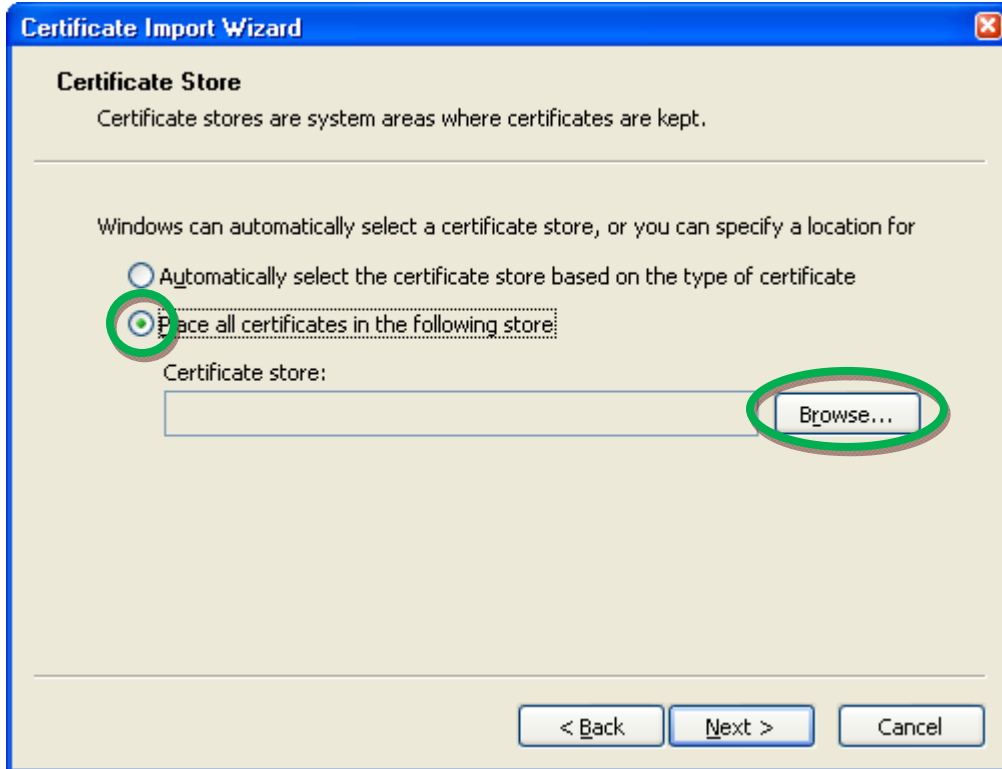
- On the Certificate dialog box, click the **Install Certificate...** button.



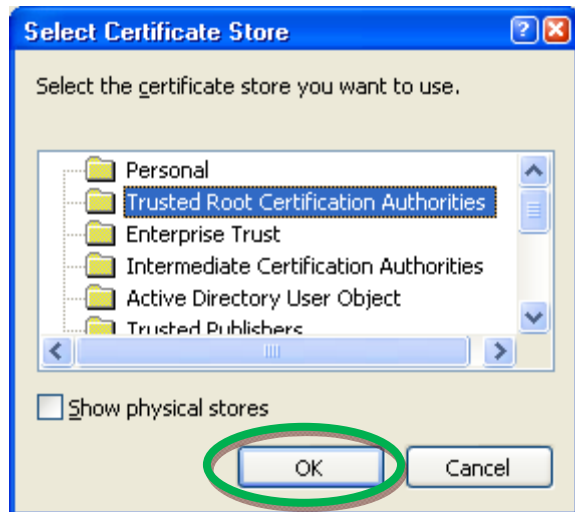
5. When the Certificate Import Wizard pops up, click on the **Next >** button.



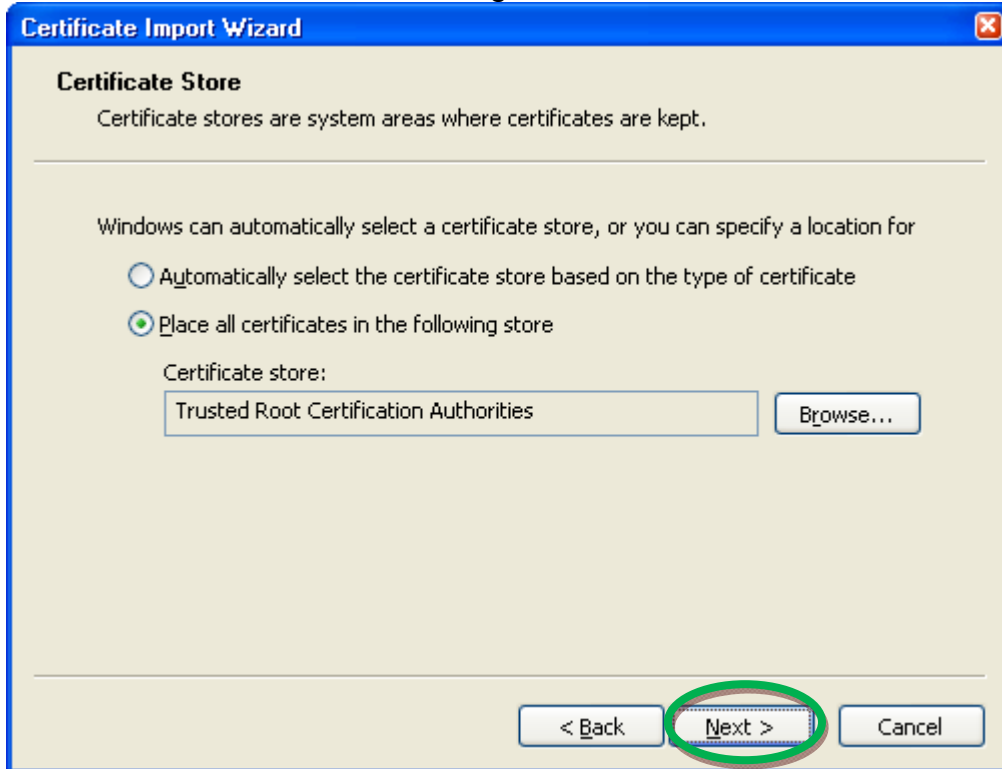
6. On the Certificate Store dialog, select “Place all certificates in the following store” and then click the **Browse...** button.



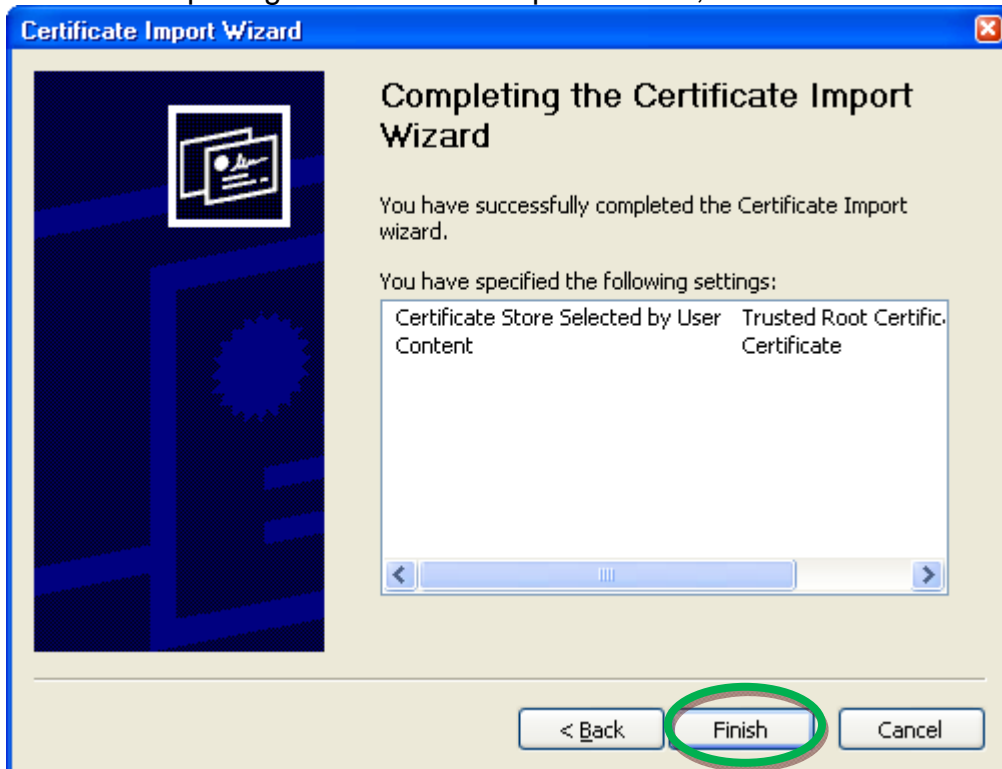
7. Select the **Trusted Root Certification Authorities** folder and click the **OK** button.



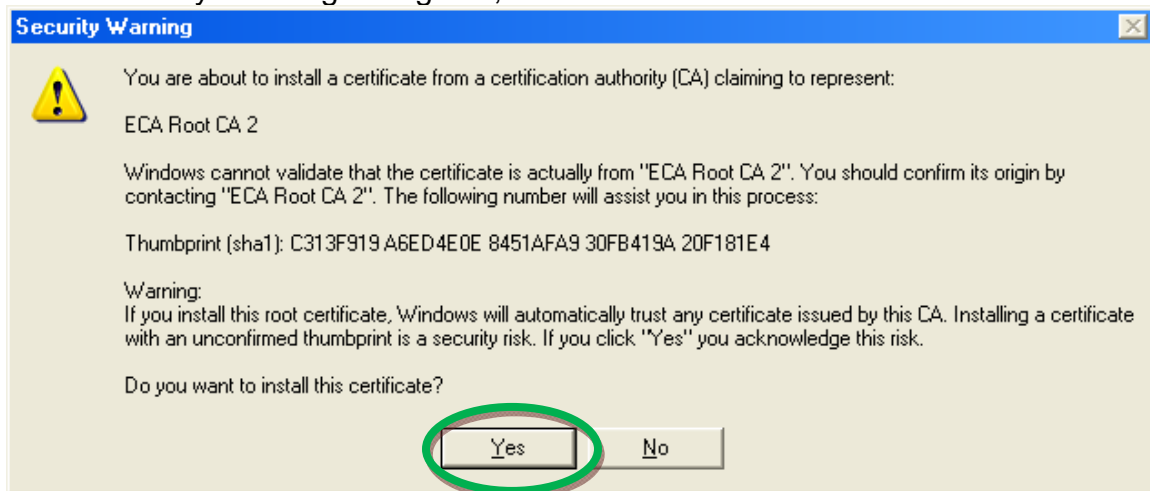
8. Back on the Certificate Store dialog, click the **Next >** button.



9. On the Completing the Certificate Import Wizard, click on the **Finish** button.



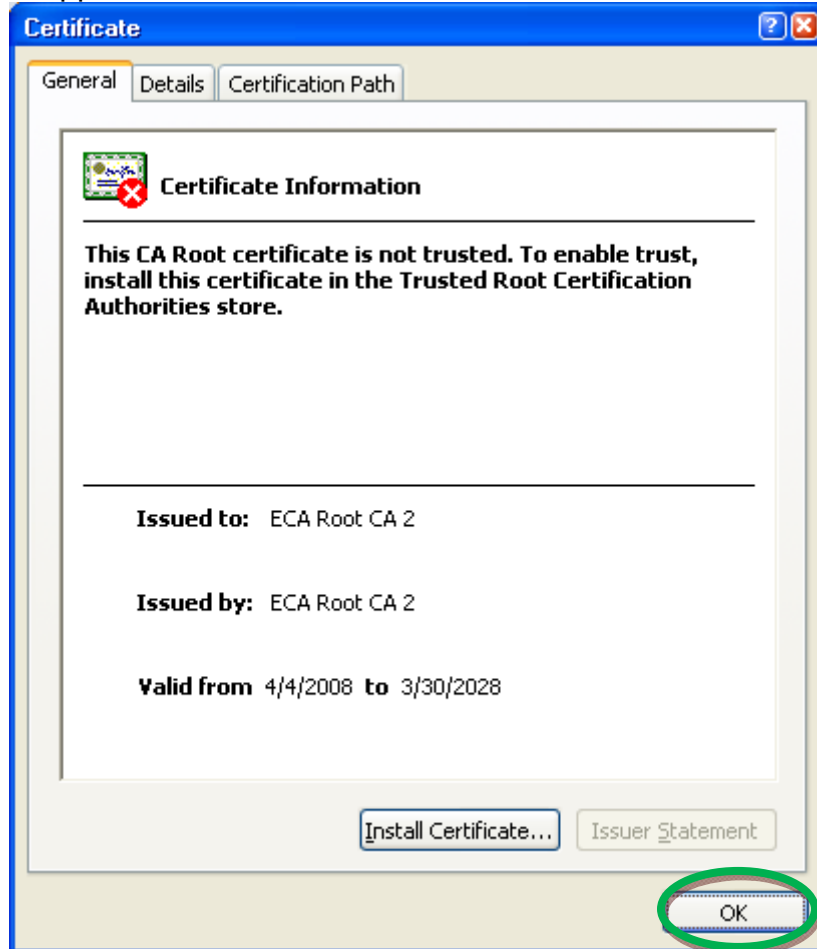
10. In the Security Warning dialog box, click the **Yes** button



11. At "The import was successful, click the **OK** button.



12. On the Certificate dialog box, click the **OK** button. The Certificate dialog box will disappear.



13. Back on the web page Click on Step 2 Trust the ORC ECA SW3 Certificate Authority. (This is a specific ORC CA server that issues Medium Assurance or browser-based certificates.)

External Certificate Authority - Windows Internet Explorer

http://eca.orc.com/trustmsie.html

File Edit View Favorites Tools Help

Google Search

ZONEALARM Protection Activity Site Status

ZONEALARM SPY BLOCKER Search Web

External C... x kurpadr [ORC ...

Print and keep this page for reference. Upon clicking the links for **Step 1** through **Step 3** below your browser will prompt you to open the certificate prior to installing it. Follow the sequence below as you install the ECA Root and ORC ECA Certificates.

Screen 1:	Click Open in the "File Download" window.
	NOTE: If the certificate will not open, select save, and open it from your desktop
Screen 2:	Review the text and click Install Certificate .
Screen 3:	Review the text and click Next .
Screen 4:	Review the text and click Next .
Screen 5:	Review the text and click Finish .
Pop-Up:	"The Import was Successful." Click OK
Screen 6:	Return to the "Certificate" window: Click OK

➔ **Step 1. Trust the ECA Root 2 Certificate Authority ::** [Click Here](#)

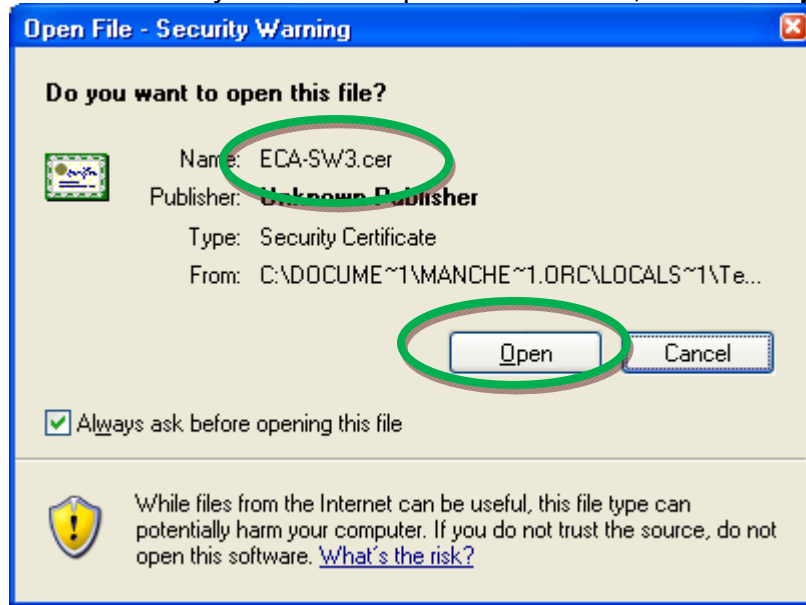
➔ **Step 2. Trust the ORC ECA CA SW3 Certificate Authority** [Click Here](#)

➔ **Step 3. Trust the ORC ECA CA HW3 Certificate Authority ::** [Click Here](#)

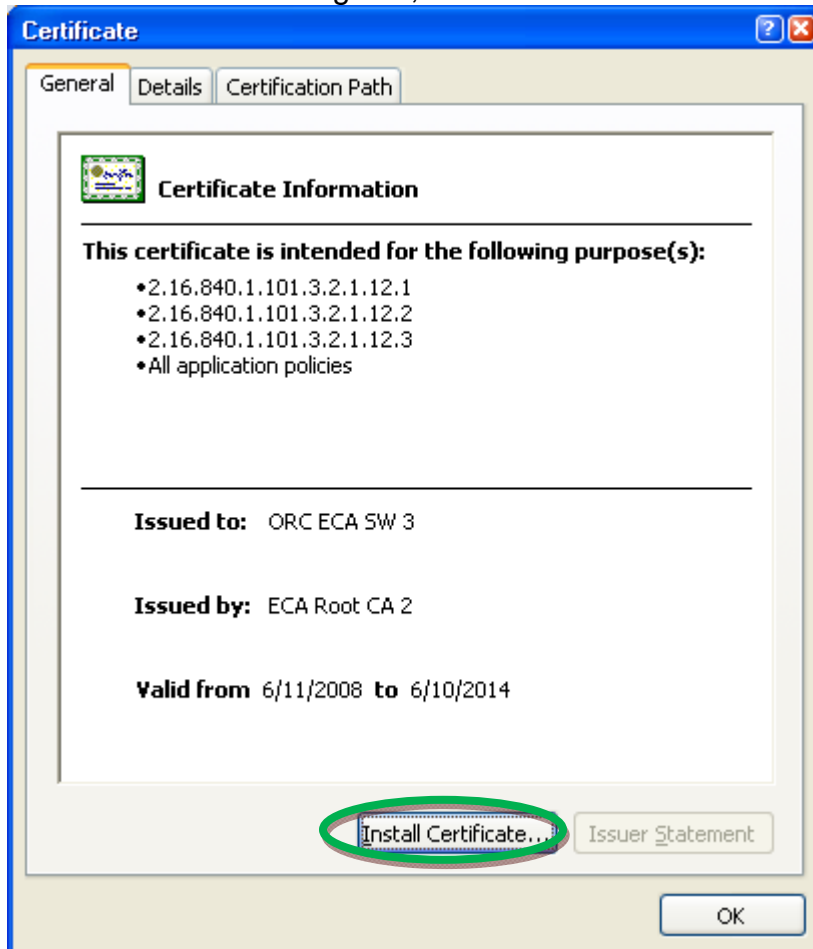
➔ **Step 4. (Optional) Trust ORC ECA Certificates issued prior to 1 July 2008 ::** [Click Here](#)

➔ **Step 5. Obtain Your Certificate ::** [Click Here](#)

14. When asked if you want to open this file now, click the **Open** button.



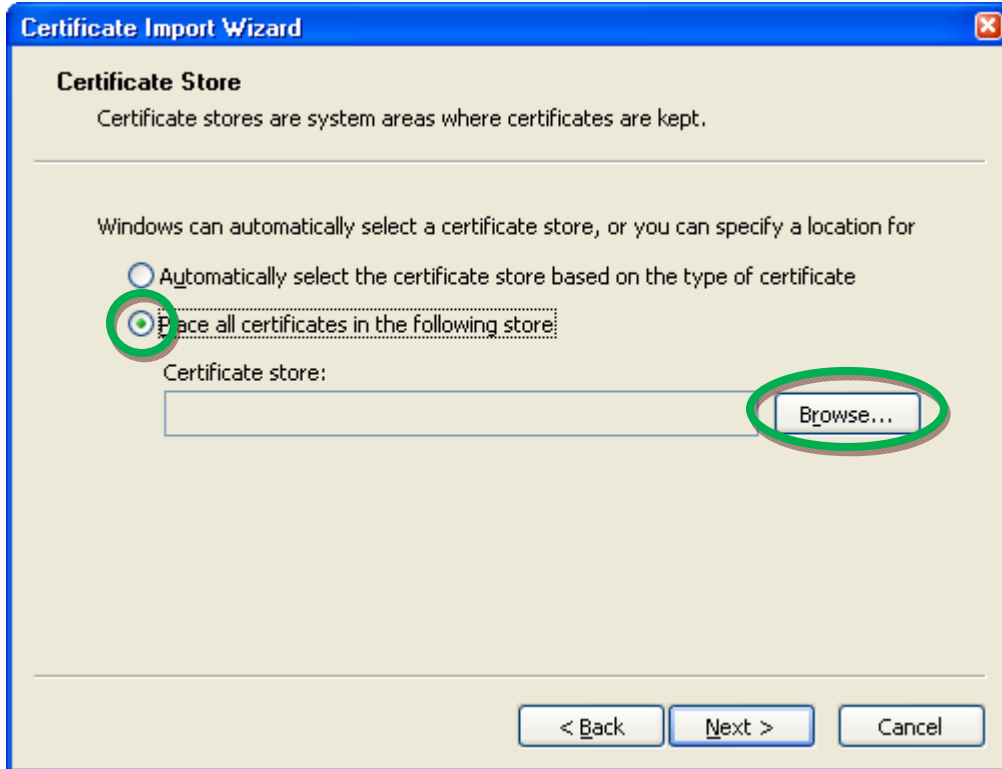
15. On the Certificate dialog box, click the **Install Certificate...** button.



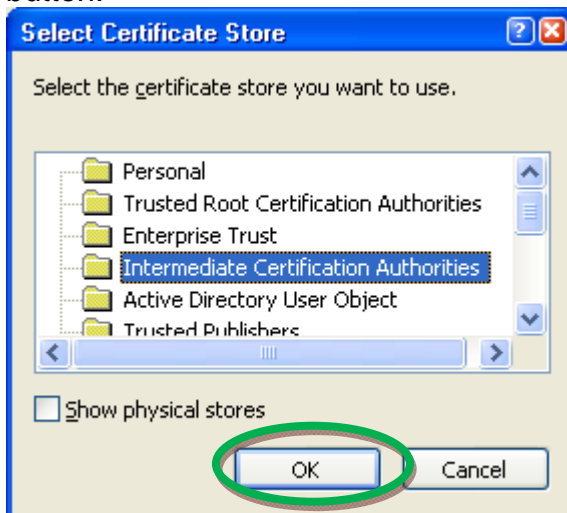
16. When the Certificate Import Wizard pops up, click on the **Next >** button.



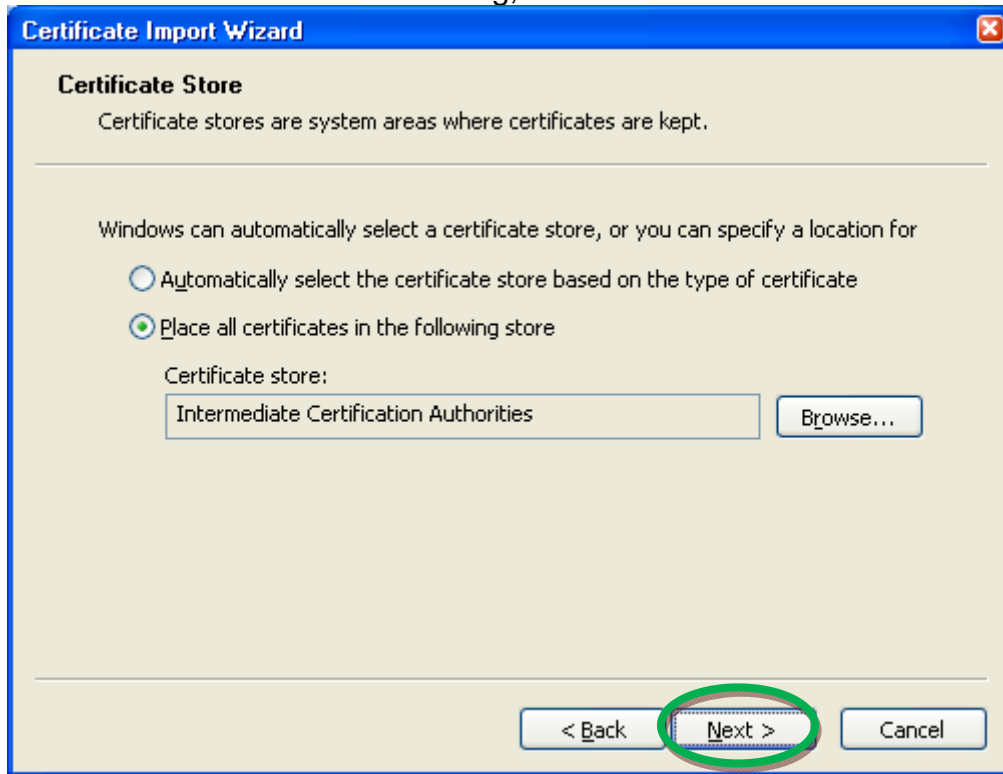
17. On the Certificate Store dialog, select “Place all certificates in the following store” and then click the **Browse...** button.



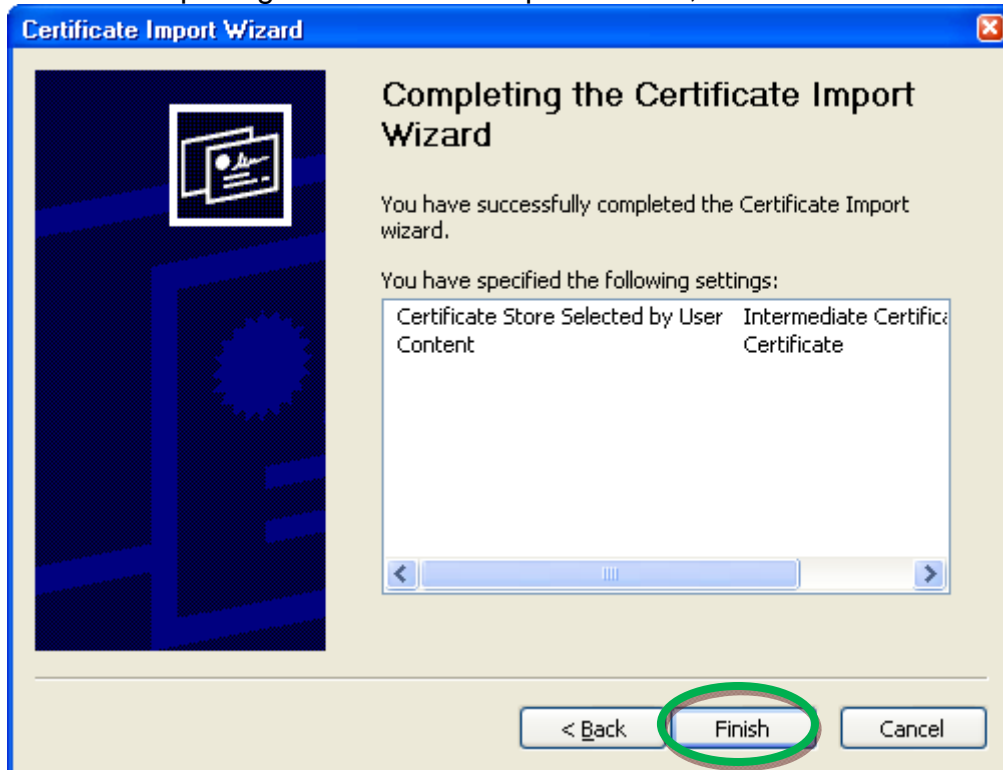
18. Select the **Intermediate Certification Authorities** folder and click the **OK** button.



19. Back on the Certificate Store dialog, click the **Next >** button.



20. On the Completing the Certificate Import Wizard, click on the **Finish** button.



21. At “The import was successful, click the **OK** button.



22. Back on the web page Click on Step 2 Trust the ORC ECA HW3 Certificate Authority. (This is a specific ORC CA server that issues Medium-Token Assurance and Medium-Hardware Assurance or hardware-based certificates.)

External Certificate Authority - Windows Internet Explorer

http://eca.orc.com/trustmsie.html

File Edit View Favorites Tools Help

Google Search

ZONEALARM Protection Activity Site Status

ZONEALARM SPY BLOCKER Search Web

External C... x kurpadr [ORC ...

Print and keep this page for reference. Upon clicking the links for **Step 1** through **Step 3** below your browser will prompt you to open the certificate prior to installing it. Follow the sequence below as you install the ECA Root and ORC ECA Certificates.

Screen 1:	Click Open in the "File Download" window.
	NOTE: If the certificate will not open, select save, and open it from your desktop
Screen 2:	Review the text and click Install Certificate .
Screen 3:	Review the text and click Next .
Screen 4:	Review the text and click Next .
Screen 5:	Review the text and click Finish .
Pop-Up:	"The Import was Successful." Click OK
Screen 6:	Return to the "Certificate" window: Click OK

➔ **Step 1. Trust the ECA Root 2 Certificate Authority** :: [Click Here](#)

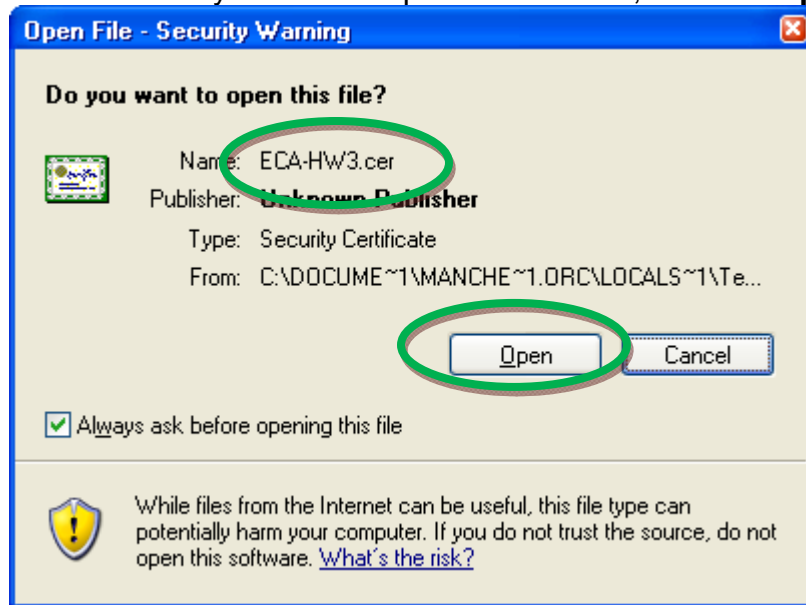
➔ **Step 2. Trust the ORC ECA CA SW3 Certificate Authority** :: [Click Here](#)

➔ **Step 3. Trust the ORC ECA CA HW3 Certificate Authority** :: [Click Here](#)

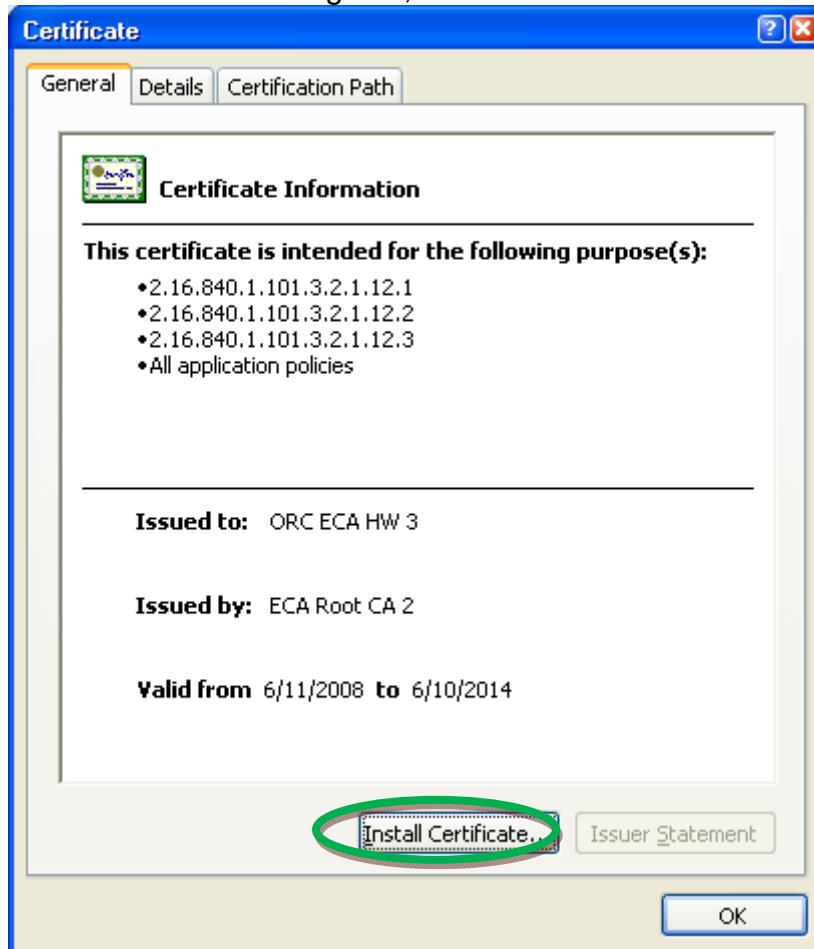
➔ **Step 4. (Optional) Trust ORC ECA Certificates issued prior to 1 July 2008** :: [Click Here](#)

➔ **Step 5. Obtain Your Certificate** :: [Click Here](#)

23. When asked if you want to open this file now, click the **Open** button.



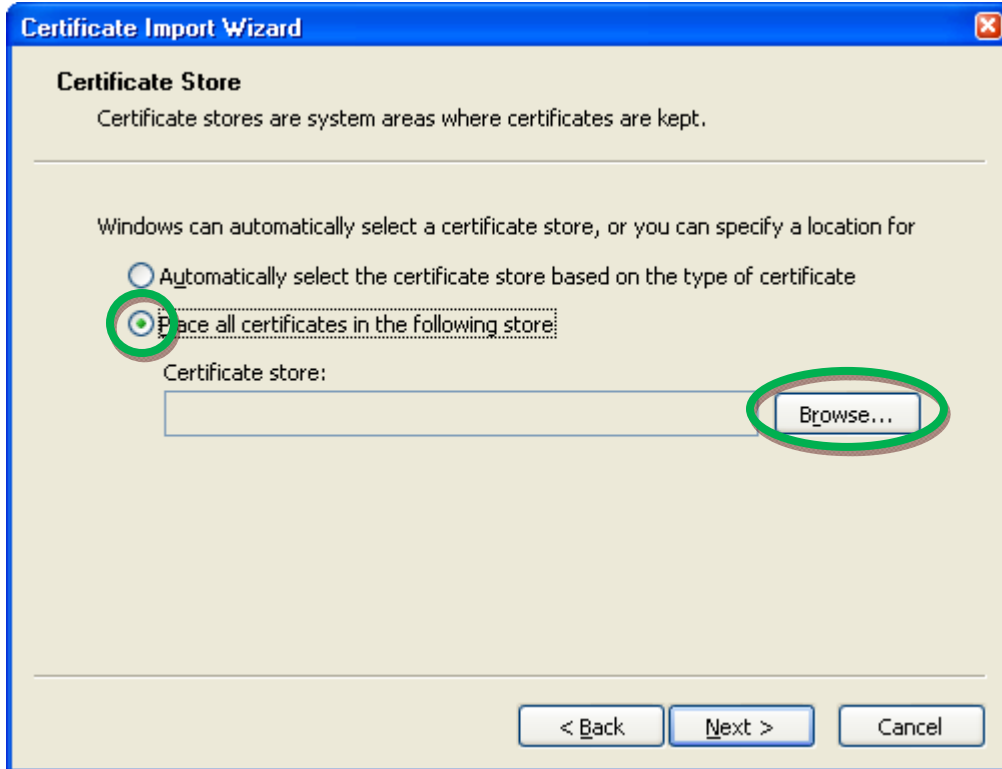
24. On the Certificate dialog box, click the **Install Certificate...** button.



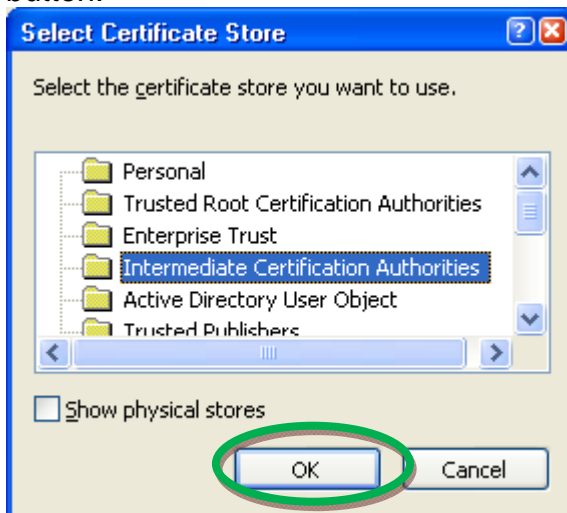
25. When the Certificate Import Wizard pops up, click on the **Next >** button.



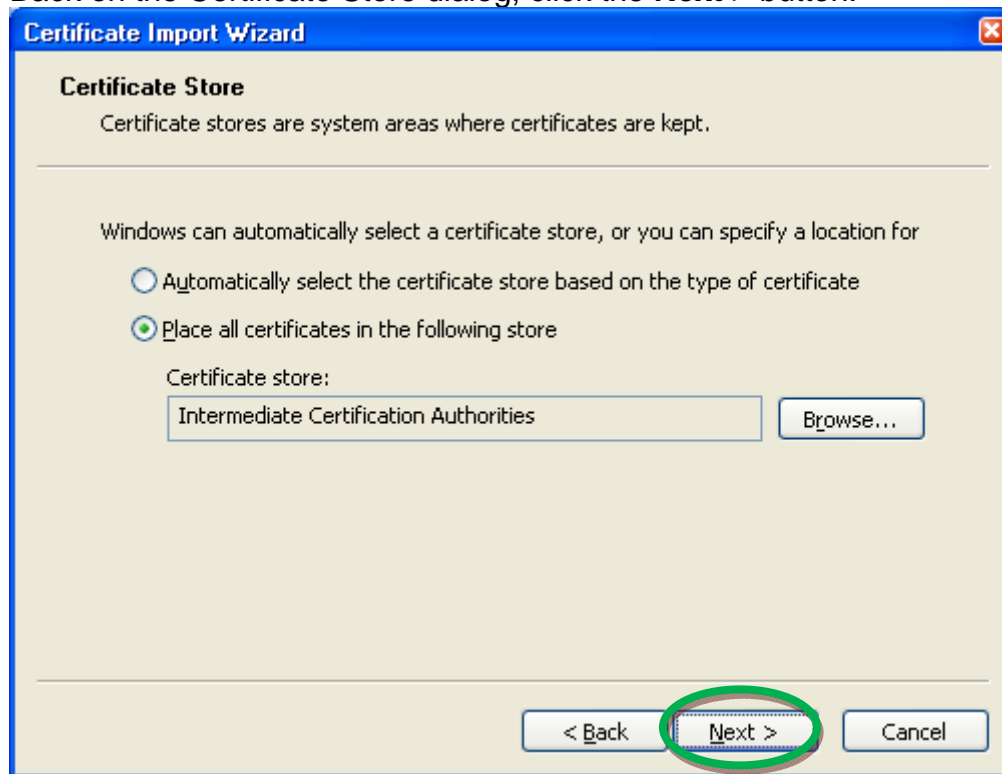
26. On the Certificate Store dialog, select “Place all certificates in the following store” and then click the **Browse...** button.



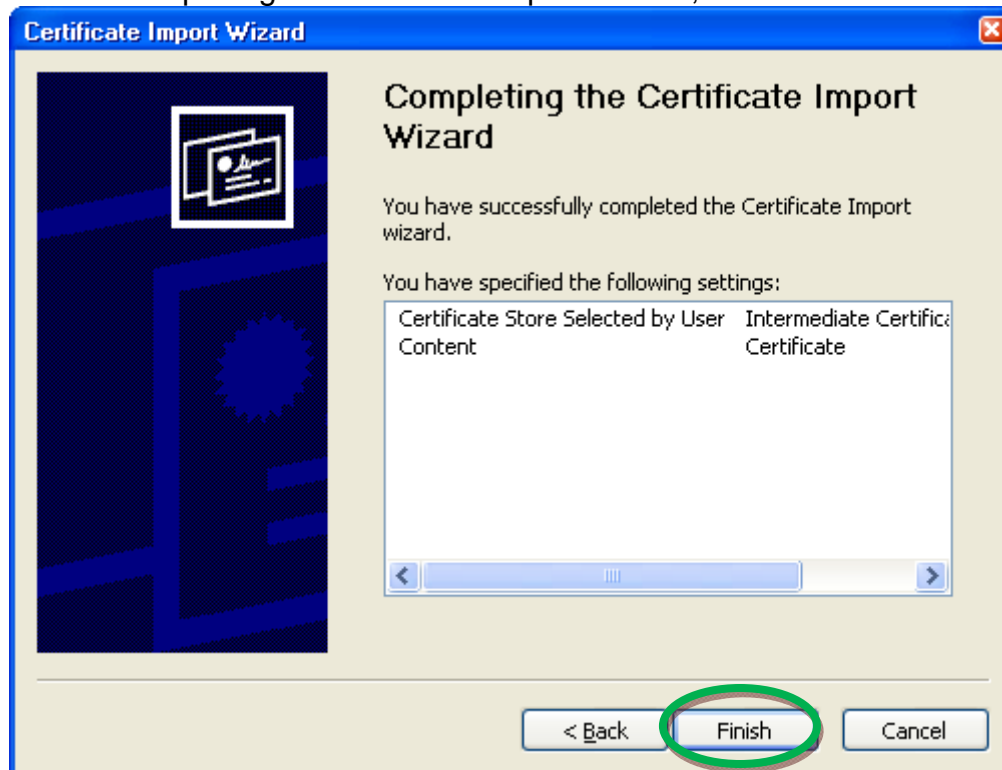
27. Select the **Intermediate Certification Authorities** folder and click the **OK** button.



28. Back on the Certificate Store dialog, click the **Next >** button.



29. On the Completing the Certificate Import Wizard, click on the **Finish** button.



30. At “The import was successful, click the **OK** button.



31. Microsoft now trusts the ORC ECA PKI